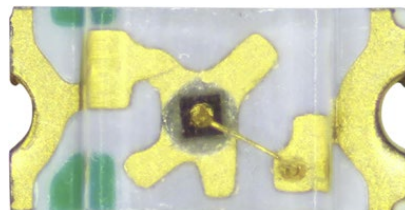


SMD LED

Blue 2.8...3.6 V 0603

SPECIFICATION:

Package	0603
Light colour	Blue
Transmission angle	130 °
Case colour	Transparent
Housing type	SMD
Conducting-state voltage max.	3.6 V
Conducting-state voltage min.	2.8 V
Dominant wavelength	468 nm
Forward current	30 mA
Forward voltage	2.8...3.6 V
Luminous intensity	120 mcd
Luminous intensity max.	120 mcd
Luminous intensity min.	120 mcd
Off-state current	10 µA
Off-state voltage	5 V
Operating temperature	-40...+85 °C
Peak wave length	470 nm
Power	100 mW
Technology	InGaN



Art. Nr.

RND 135-00044

